



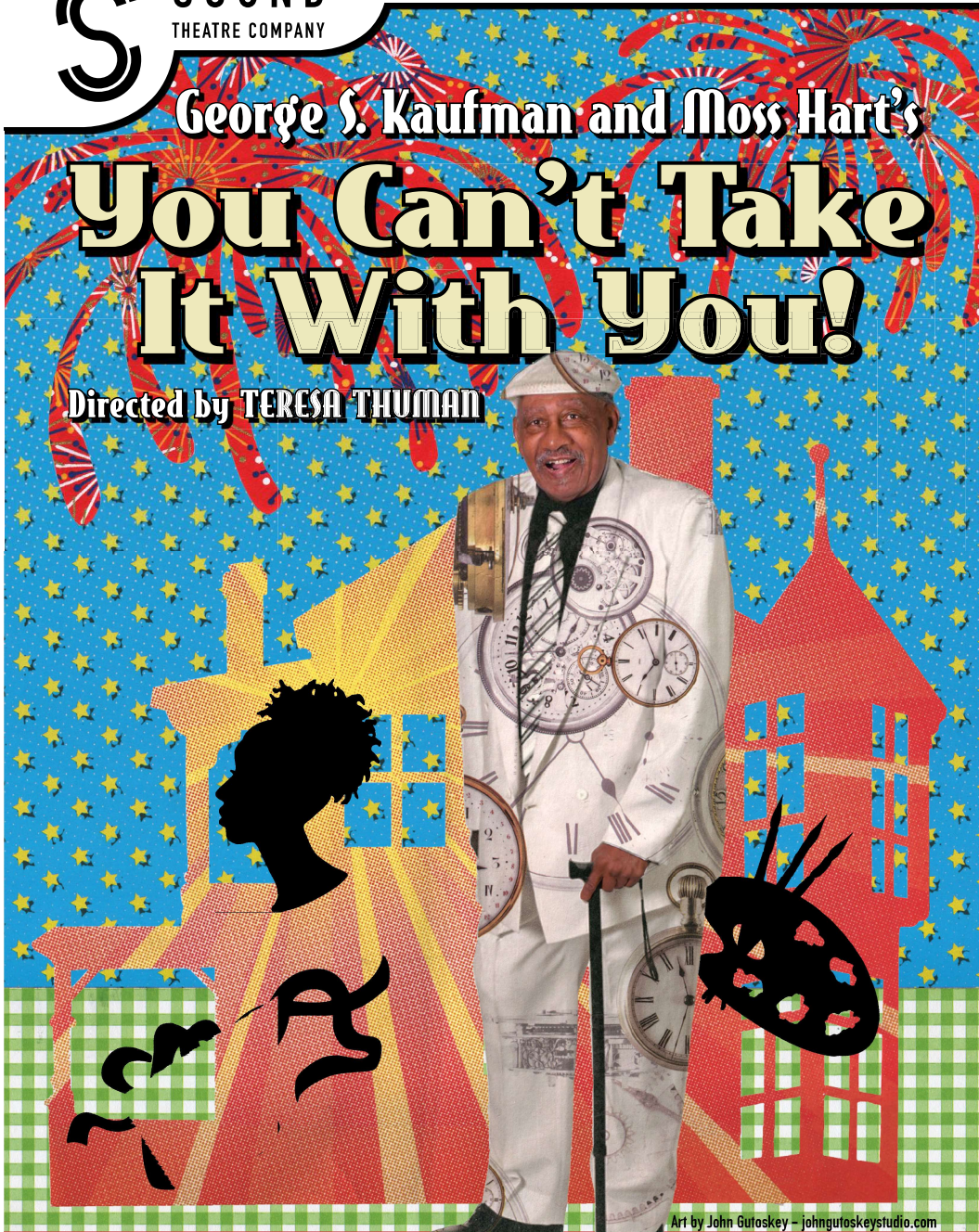
SOUND
THEATRE COMPANY

2018 SEASON | The Human Family

George S. Kaufman and Moss Hart's

You Can't Take It With You!

Directed by **TERESA THUMAN**



Art by John Gutoskey - johngutoskeystudio.com

Feb 24 – Mar 11, 2018
Center Theatre • Seattle Center Armory
www.soundtheatrecompany.org



3-TIME WINNER
GREGORY AWARD
THEATER OF THE YEAR

FROM THE ARTISTIC DIRECTOR

Welcome to Sound Theatre Company's 12th Season which we are proud to title "The Human Family: Towards a Radical Inclusion." We hope today's performance and this season will affirm your part in a larger community family that pushes the definition of inclusion. This timeless and subversive comedy by Kaufman and Hart is a perfect play to explore the meaning of this "chosen" family. Theatre is at its best when it invites us to consider our connectedness and shared human experience, our shared joys and struggles, and our shared hopes and dreams for a better life.

About a year ago, early in the current administration, I attended a panel discussion that included local legend, Sherman Alexie. At that event, Alexie mused that perhaps we had become too attracted to dystopian models in our storytelling, and that it would serve us as a society at this time to consider "Utopian" narratives. Last month, after a few weeks into rehearsals for *You Can't Take It With You* with this generous cast, I realized that we were doing just that: we were painting an idealized version of reality just as Alexie had encouraged. It was not hard to understand the attraction to such an uplifting world and embrace the road-map offered by Martin "Grandpa" Vanderhoff. I have come to celebrate and cherish my time with the Sycamore-Vanderhoff household as a place of pure loving acceptance; a place of restoration from the oppressive cruel judgment and the immoral aggregation of power and wealth that is shaping our daily life in 2018.

We hope you will feel welcomed to join our family by returning for our other performances and consider a much-needed financial gift to Sound Theatre Company. Theatre is the most vital place I know to gather together in a shared space and experience the untold stories of marginalized communities. But we are also vulnerable and we need your support to continue to bring you innovative and excellent theatre experiences. Grandpa reminds us to consider what we value in a life well-lived, and, after all, you can't take it with you.

Teresa Thuman
Founding Artistic Director

CELEBRATE THE HUMAN FAMILY
Fundraiser for Sound Theatre Company (a 501c3 nonprofit)

**SUNDAY, MARCH 18,
6:00 - 8:30PM**

**DAYBREAK STAR CULTURAL CENTER
AT DISCOVERY PARK**

SOUND THEATRE COMPANY

YOU CAN'T TAKE IT WITH YOU

A PLAY IN THREE ACTS

Written By Moss Hart and George S. Kaufman

Directed by Teresa Thuman

SETTING

The Home of Martin Vanderhof, New York, 1936

CAST

GRANDPA TEOTHA DENNARD
PENNY SHERMONA MITCHELL
ESSIE BO MELLINGER
ED AARON JIN
PAUL GURVINDER PAL SINGH
MR. DEPINNA LAURIE LYNCH
RHEBA ALYSHA CURRY
DONALD GEB BROWN
ALICE AYO TUSHINDE
GAY WELLINGTON NEVE KAMILA MAZIQUE-BIANCO
MR. KIRBY BOB WILLIAMS
TONY COREY SPRUILL
MRS. KIRBY LAURA STEELE
KOLENKHOV CHRIS SHEA
OLGA KATRINA TERESA THUMAN*
HENDERSON/THE MAN ANDREW WEISS
GOVERNMENT AGENTS CASEY DECAIRE, KAT HENWOOD

**THE ACTOR APPEARS COURTESY OF ACTORS' EQUITY ASSOCIATION,
THE UNION OF PROFESSIONAL ACTORS AND STAGE MANAGERS IN THE UNITED STATES.*

You Can't Take It with You is performed with two 15-minute intermissions.

Act 1: A warm summer afternoon.

Act 2: A week later.

Act 3 : The next afternoon.

You Can't Take It with You is presented by special arrangement
with Dramatists Play Service, Inc., New York.

Funding Provided in part by



OFFICE OF ARTS & CULTURE
SEATTLE



CULTURE

PRODUCTION TEAM

DIRECTOR.....TERESA THUMAN
ASSISTANT DIRECTOR SADIQUA IMAN
STAGE MANAGERKYLE TRAVER
SET DESIGNER ROBIN MACARTNEY
ASSISTANT SET DESIGNERPARMIDA ZIAEI
COSTUME DESIGNER MARGARET TOOMEY
LIGHTING DESIGNER AHREN BUHMANN
SOUND DESIGNERD.R. AMROMIN
DIALECT COACH MARIANNA DEFAZIO
ASSISTANT STAGE MANAGER CASEY DECAIRE
WARDROBEKAT HENWOOD
PRODUCTION INTERNLUCY BARCOTT
POSTER ARTWORK JOHN GUTOSKY



STAFF

PRODUCING ARTISTIC DIRECTOR.....TERESA THUMAN
ARTISTIC PRODUCERMARGARET TOOMEY
PRODUCTION MANAGER MADISON SILVA
HOUSE MANAGERS MARY BROWN, ASHLEY PODPLESKY
ACCESSIBILITY COORDINATOR CHARLOTTE MORRILL
PUBLIC RELATIONS MANAGER JOJO ABAOAG

BOARD OF DIRECTORS

PATRICK LENNON, PRESIDENT
ANN MCCURDY, SECRETARY
RICHARD SCHAEFER, TREASURER
RAY BUNNAGE
KATHERINE CLELAND
KEN MICHELS
NATHAN REEVES
GURVINDER PAL SINGH
TERESA THUMAN



TEOTHA DENNARD



SHERMONA MITCHELL



BO MELLINGER



AARON JIN



GURVINDER PAL SINGH



LAURIE LYNCH

CAST

Teotha Dennard (Grandpa) is an original founding member of The Group Theatre and former Artistic Director of Black Arts West Theatre. He has performed in most of the major Theatre companies in Seattle as well as in Denver and Atlanta. In addition to Tee's numerous theatre credits he has appeared in several film and television ventures, most notably, *An Officer And A Gentleman*, *Black Widow*, *Seven Hours To Judgment*, *The Last Innocent Man* (HBO), and *Grimm* (NBC). His latest projects include an episode of TNT'S *Librarians*, *Autumn Waltz* a short film, and soon to be released Megan Griffiths films *Sadie* and *Seattle Visits-The Sound*. Tee is ver excited about the opportunity to work with Teresa Thuman and Sound Theatre to bring this inclusive vision of YCTIWY and the rest of this season to life.

Shermona Mitchell (Penny) is a local actor, director and teaching artist. Originally from Kentucky, Shermona moved to Seattle to attend Cornish College of the Arts where she earned her BFA in Theater. She has worked locally with ACT Theatre, Book-It Repertory Theatre, Live Girls! Theatre, Seattle Children's Theatre, Pony World Theatre, Anything Is Possible Theatre, Seattle Musical Theatre, 14/48: The World's Quickest Theater

Festival, Theater Schmeater, The Collision Project, Copious Love, Seattle Public Theatre, STAGEright and most recently with Azeotrope. Shermona is the 2016 Gregory Award recipient for Best Supporting Actress.

Bo Mellinger (Essie) was first seen with Sound Theatre Co. in *The Wild Party* and is delighted to be wearing more clothes this time around! He was most recently seen sans pants as Vodník the Green Fairy in *Bohemia* at the Triple Door. Before that, living his dream role as Adam/Felicia Jollygoodfellow in *Priscilla, Queen of the Desert* with BPA. Thank you to all the fearless women worldwide that helped inspire Essie.

Aaron Jin (Ed) is ecstatic to join the company of *You Can't Take It With You* in the role of Ed Carmichael. As a recent graduate from the University of Washington, it's an honor to play with Sound Theatre Company. He loves supporting theatre onstage and off through communications and social justice. Recently, he acted in his 21st Birthday Solo Show. Feel free to follow on social media for his 22nd Birthday Solo Show. Love to fellow Seattle artEquity Cohort peeps (Teresa, Margaret, Laurie) and the whole big family.

Gurvinder Pal Singh (Paul), aka Guru, has been a common presence on the Seattle stage. Be it as an MC, an Actor, a Writer, a Director, a Dancer or a Dance Teacher. During the day he dons the Engineer hat at Salesforce and enjoys pursuing his passions in acting / dancing outside of that. We've seen him on stage in multiple memorable shows like *Ek Tha Gadha*, *The Compleat Wrks of Wllm Shkspr (Abridged)*, *Shaadi.CON*, *Indian Ink*, *A Small History of Amal*, and many more. Guru sits on the board of Sound Theatre Company and Pratidhwani and has worked with the ACT Theatre, Taproot Theatre, Forward Flux Productions, 14/48 and more.

Laurie Lynch (Mr. DePinna) is loving her first production in Seattle. Prior to Seattle, Laurie was performing in Denver, Colorado. Laurie performed in the original production of *Lord of the Butterflies* at the Denver Center for Performing Arts, as the Lord. She played Vern and Wren in two productions of *Five Lesbians Eating a Quiche*. Classic roles include: Puck in *A Midsummer Night's Dream* and Ariel in *The Tempest*. Lynch received her MFA in Contemporary Performance from Naropa University. She has written and performed 2 solo shows *Charismatic Megafauna*, and *The History*



ALYSHA CURRY



GEB BROWN



AYO TUSHINDE



**NEVE KAMILAH
MAZIQUE-BIANCO**



BOB WILLIAMS



COREY SPRUILL

of *Burlesque*. Laurie also performs as Drag King, Dan D Lite. He was in Denver Center for Performing Arts, Drag Machine. Lynch is committed to creating work that puts Diversity, Inclusion, and Equity at the center of its mission. Laurie wants to thank her partner Andie for supporting her and for putting the boys to bed alone.

Alysha Curry (Rheba) is delighted to be working with Sound Theatre Company again! Her last STC show was *The School For Lies*. She was most recently seen in *The Twilight Zone: Live!* (Theater Schmeater), *Much Better* (Really-Really Theatre Group), *Coyote Tails* (The 14/48 Projects), and *Private Lives* (Reboot Theatre). Look for her next alongside her husband in *The Country Wife* at Theater Schmeater. Thank you to Teresa for this extraordinary opportunity. [love to Geb.]

Geb Brown (Donald) is so excited to work with Sound Theatre Company and Teresa Thuman. He was recently seen in *Twelfth Night* (Ghost Light Theatricals), *The Lion, the Witch and the Wardrobe* (Theater Schmeater), and *Dr. Ballard's Vaudeville Players* (GLT). Look for him next alongside his wife in *The Country Wife* at Theater Schmeater (where he is on

staff.) Geb is an avid runner, so when he's not on stage you can catch him running the streets and hills of Seattle. [love to Alysha.]

Ayo Tushinde (Alice) graduated from Savannah College of Art & Design before moving to Seattle in 2011. She has enjoyed working with a number of local theatres, including Seattle Shakespeare Company, Live Girls! Theater, Theater Schmeater, Book-It Repertory Theatre, Mirror Stage, Cafe Nordo, Sound Theatre Company, Washington Ensemble Theatre, Seattle Repertory Theatre, and The Seagull Project. Ayo is adamant about the need for theatres in Seattle to strive for inclusivity.

Neve Kamilah Mazique-Bianco (Gay Wellington) is the descendent of Civil Rights leaders, river travelers, and children's book authors. They have been acting, dancing and singing since they were a child in Clinton, New Jersey. Their one-femme play-ballet, *Bet Ya UnGodly Things*, set in the countryside they grew up in, debuted and sold out at Gay City Arts in Seattle in January 2018. Neve received their B.A. from Hampshire with concentrations in dance-theatre and mythical representations of disabled people in literature and film in 2012. The work with artistic and activist groups

Sins Invalid and *Play They*, and is the founder of Neve Be Bad Productions. In 2017, they received the Gender Justice League's Celebration Award for their co-directing of and acting in the play *Rising Up* by Ebo Barton and Sarah Rosenblatt. Neve was trained in physically integrated dance by Axis Dance Company, and they teach, perform, and show work internationally. Neve loves being and playing Gay.

Bob Williams (Anthony Kirby) is happy to take the stage again with Sound Theatre. Previous work includes Theater Schmeater, Pony World, ReAct, Book-It, ArtsWest, Annex, Langston Hughes, The 14/48 Projects and ACT. Many thanks to cast, crew and company for making the magic happen. He thanks you for coming out tonight and supporting live theatre.

Corey Spruill (Tony Kirby) is thrilled to be back working with Sound Theater! He's had a great time working and laughing with this special cast. Corey was last seen on Sound's stage in *Hoodoo Love*, *The Last Days of Judas Iscariot*, *School for Lies*, and *Doggs Hamlet/ Cahoots Macbeth*. Other Seattle theater credits include: *Storyville Rising* (Seattle Immersive), *Best of Enemies* (Taproot Theater), *Girl You Know It's True* (TOJ), *Broke-*



LAURA STEEL



CHRIS SHEA



ANDREW WEISS



TERESA THUMAN



CASEY DECAIRE



KAT HENWOOD

ology (SPT), *Merchant of Venice* (Quiet), *Zooman and the Sign* (BrownBox), *A Beheading in Spokane* (Schmeater), *Henry VIII* (Greenstage). Next, you should come out and see Corey perform in Sound Theater's ASL *Midsummer Night's Dream*. Corey would like to encourage everyone to Keep Dreaming & Keep Striving to achieve your goals. Change is coming, please believe it!

Laura Steele (Miriam Kirby) is thrilled once again to work with Sound Theatre Company, and to share the stage with such amazing talent. Laura has toured as a teaching artist with Book-It Repertory, been in productions with Ghost Light Theatricals, and Live Girls!. She was last seen in *The Wellesley Girl* with The Horse in Motion.

Chris Shea (Kolenkhov) is honored to be back with Sound Theatre Company, having last been seen as Richard Burbage in *Holiday of Errors*. Originally from Dayton, OH (go Flyers!), he has worked with theatre companies across the nation on both sides of the table. In his civilian life, Chris works as a licensed home inspector for Optimized Inspection Services. He really appreciates that you are here today.

Andrew Weiss (Henderson/The Man) is delighted to be joining the Sound Theater

Company for *You Can't Take It With You!* He is a founding member of the comedy group White Bagel that has performed at the Boston Comedy Arts Festival, Denver Improv Festival, Compass Improv Festival and frequently at Seattle's own gem, The Pocket Theater. He has trained with Bay Area Theater Sports, Upright Citizen's Brigade, The Second City and Freehold Theater. He is excited to be a part of the Intersections Festival this March, right here in Seattle! Andrew received a doctoral degree from Bastyr University, loves spending time with his husband Bruce and their dog, Percy, and his favorite place is the Oregon Coast.

Teresa Thuman* (Olga Katrina/Director) *please see bio on next page.*

Casey DeCaire (Government Agent/ASM) Regional Theatre Production: *Vanya, Sonia, Masha, and Spike* (Lamplight Productions; Assist Set Designer), *The Magic of Christmas* (The Young Americans; Costume Designer) Film/Television Production: *ESPN Sports Science* (ESPN), *Wipeout* (ABC), *Storage Wars* (A&E) National Theatre Performance: *The Best Little Whorehouse in Texas* (Broadway Rose Theatre Company); *Spelling*

Bee, Camelot, Nunsense A-Men (Thunder Bay Theatre); *Oklahoma, South Pacific, The Sound of Music* (Seegerstrom Center for the Arts), *Boyne Highlands Dinner Theatre 2013* (The Young Americans) International Theatre Performance: *Hooray for Hollywood, A Broadway Tribute, The Magic of Christmas, Turn Up the Music Outreach Tours 2009-2012* (The Young Americans)

Kat Henwood (Government Agent/Wardrobe Crew) is excited to be taking part in her first production with Sound Theatre Company and looks forward to many more. A veteran costume, prop and set designer, Kat originally hails from Raleigh, NC where she worked extensively with the Raleigh Little Theatre and Burning Coal Theater Company. She is also owner and operator of Golden Bumble Designers which creates costumes and props for the Seattle theater, burlesque and cosplay communities. Kat is a member of The Salvation Army Western Territory creative arts ensemble and is blessed to be able to share her love of theater and performance with others.

Program cover layout and production photos in the lobby are courtesy of Ken Holmes.

CREATIVE TEAM

Teresa Thuman* (Director & STC Founder/Producing Artistic Director) Teresa founded Sound Theatre Company in 2006, for which she has directed productions of *The Last Days of Judas Iscariot*, *Holiday of Errors*, *School for Lies*, *Dogg's Hamlet*, *Cahoot's Macbeth*, *The Illusion*, *The Foreigner*, *Pygmalion*, *Compleat Works of Wllm Shkspr (Abridged)*, *The Tempest*, *Troilus and Cressida*, *Top Girls*, *The Last Five Years*, *The Further Adventures of Anse and Bhule in No-Mans Land and The Belle of Amherst*. Other local directing credits include *Othello*, *Henry VIII*, *The Bacchae*, *As You Like It*, *King John* (GreenStage); *Opera Workshop*, *A Little Night Music*, *Big Fish*, *The Mystery of Edwin Drood*, *Down In The Valley*, *Sweeney Todd*, *Dido And Aeneas*, *Working, She Loves Me*, *Into the Woods*, *The Impresario* (Shoreline CC); *The Underpants*, *The 39 Steps* (Mount Baker Theatre), *Pericles* (Cornish College of the Arts); *Ain't Misbehavin'*, *Fiddler on the Roof*, *Anything Goes*, *High Society*, *My Way* (Seattle Civic Light Opera); *HAIR*, *Picasso at the Lapine Agile*, *The Who's Tommy*, *Noises Off*, *Urinetown*, *Kiss Me Kate*, *The Producers*, *Secret Garden* (Bainbridge Performing Arts); *Miracle Worker*, *Tartuffe*, *Cat on a Hot Tin Roof*, *Oliver!* (Driftwood Players); *The Book of Nathan* (Theater Schmeater) and numerous new-work projects and festivals. Teresa has taught at UW School of Drama PATP, UNC Chapel Hill, Shoreline Community College, Cornish College, George Fox University, Allan Hancock College, Freehold

ETI and served eight years as an Artist-in-Residence at PCPA Theatrefest. She holds an MFA in Directing from University of Portland and a BFA in Acting from Webster University Conservatory of Theatre Arts.

Sadiqua Iman (Assistant Director) is Founding Artistic Director of Earth Pearl Collective, a queer black womyns social justice non-profit organization dedicated to healing communities through artistic collaborations. Sadiqua works as a freelance director, choreographer, costume designer, teaching artist, and project manager in the Seattle-area; Chicago, IL; and Washington, D.C. Learn more at www.earthpearlcollective.com

Kyle James Traver (Stage Manager) PRODUCTION STAGE MANAGEMENT: *Burn This* (Theatre22); *Hoodoo Love* (Sound); *Never the Sinner* (LungFish Productions); *Five Women Wearing the Same Dress* (Rogue Theatrics) REGIONAL PERFORMANCE: *Evita* (SSR); *Into the Woods* (STAGErighT); *[BOXED.]* (LungFish Productions); *The Lisbon Traviata* (Theatre22); *Slipping* (3231 Creatives); *A Midsummer Night's Dream* (Rogue Theatrics); *Exit, Pursued by a Bear* (ArtsWest); *Kiss Me, Kate*, *Thoroughly Modern Mille* (CDA Summer Theatre); *Joseph...Dreamcoat*, *Little Shop of Horrors*, *Footloose* (University Theatre) DIRECTION/PRODUCTION: *Savage in Limbo*, *Danny & the Deep Blue Sea*, *The Last Five Years*, *Sophie* (LungFish Productions); *Five Women Wearing the Same Dress* (Rogue Theatrics) FILM: *Decent People*; *Shadow of*

Fear; *Voiceovers* (Fox & ABC Kids) EDUCATION: New York University, Tisch School of the Arts - CAP 21 (2004). Love to friends, family, and to T, C, & W. www.kylejamestraver.com

Robin Macartney (Set Designer) is excited to be working with the wonderful people at Sound Theatre for the first time. Professional credits include design work with Seattle Shakespeare Company, Café Nordo, Book-it, Washington Ensemble Theatre, Pork Filled Productions, Theatre22, Youth Theatre Northwest, Live Girls! Theater, Annex Theatre, Seattle Public Theatre, New Century Theatre Company, and Bainbridge Performing Arts. She is the resident set designer/ front of house manager at Theatre Off Jackson as well as the scene shop supervisor for the University of Puget Sound's Theatre Department.

Parmida Ziaei (Assistant Set Designer) is an architectural and interior designer based in Seattle and this is her first experience as an assistant set and props designer with Sound Theater. Theater and design have always been her passions and she's excited to merge the two, and work with an amazing cast and crew. Parmida's past experiences have been mostly residential interior design. She is originally from Iran and in her free time you will find her dancing, cooking, or just sketching with a cup of coffee.

Margaret Toomey (Costume Designer/Artistic Producer) works nationally as a scenic and costume designer. Her most recent Sound credits include scenery for *Hoodoo*

Love and costumes for *The Last Days of Judas Iscariot*. Other Seattle-area designs include scenery for *Burn This* and *The Pride* (Theatre22) and costumes for *Howl's Moving Castle* (Book-It). Margaret's work has also been seen at Bainbridge Performing Arts, Taproot, Seattle Musical Theatre, Trinity Western University (Langley, BC), Broadway By the Bay (California), Triad Stage (North Carolina), WaterTower Theatre (Texas), and Portland Stage (Maine). Margaret received her MFA in Scenography from UNC Greensboro and BA in Theatre from Grinnell College in Iowa.

Ahren Buhmann (Lighting Designer) is a Lighting, Video and Scenic designer based out of Seattle. Recent shows include *Grounded* and *Christmastown* with Seattle Public Theater, *Burn This*, *The Pride*, and *Annapurna* with Theatre22, *The Trial of Elizabeth Cree* with Opera Philadelphia, *Earnest Shackleton Loves Me* at the Tony Kiser, *Every Five Minutes* with WET, and *Carefree* with NJPAC, Ribbet.

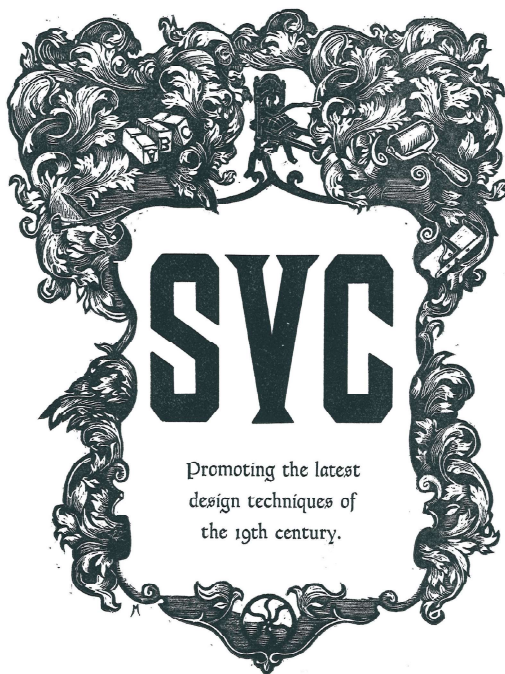
D.R. Amromin (Sound Designer) is a Los Angeles transplant, happily living in the PNW for the past 5 years. After 20+ years in the theatre working primarily as a performer and director, she finally found her voice in sound design. Seeing herself as a musician that works in the medium of collage, she holds a strong belief in the power of sound and music to emotionally impact her audiences. Locally, she has created sound designs for MAP Theatre, Dangerswitch!, Blood Ensemble, Annex Theater, and Sound Theatre Company among others. D.R. Amromin is the Resident Sound Designer at Theater Schmeater, and a member of the TSDCA.

Marianna de Fazio (Dialect Coach) has performed with STC in several shows, and coached *Nadeshiko* last season. She can currently be seen on stage at Harlequin Productions in *The Art of Racing in the Rain*. Hear her coaching work in *The Happiest Song Plays Last* upcoming with Theatre22. Much love to Teresa!

Lucy Barcott (Production Intern) is a first-year scenic design student at Bennington College in Vermont. Recent work includes stage management for *Top Girls* and *Fefu and Her Friends* at Bennington College and a rare onstage role in *Operation 1600* with Penguin Productions. Thank you to STC for having me this winter, and to everyone who made the last few months so wonderful (you know who you are).

SPECIAL THANKS

Alyson Boote
 Ariel Bradler
 Ashley Portilla
 Ben Doehr
 Book-It Repertory
 Charles Hall
 Deaf Spotlight
 District Fabric
 Elizabeth Mendenhall
 Howie Seago
 Intiman Theatre
 Jocelyne Fowler
 John Bradshaw
 John Clark
 Julian Amrine
 Ken Holmes
 Kim Stockbridge
 Libby Barnard
 Malie Fujii
 Meghan Roche
 Michael Angelo Ledezma
 Mike Wade
 Rex Carleton
 Ryan Shlecht
 Seattle artEquity Cohort
 Seattle Shakespeare
 Shoreline Community College
 Taproot Theatre
 Theatre Puget Sound
 University of Puget Sound



Did you notice that antique printing press up on the stage? It's from the School of Visual Concepts and we've got a bunch more just like it. Let us teach you how to use them in a quick 2-hour session over lunch. Classes are just \$85 and you can sign up on our website. Just one problem: What's a website?

Sign up at www.svcseattle.com

School of Visual Concepts
 2300 7th Ave, Seattle WA 98121
 206.623.1560 | info@svcseattle.com

Thank You to the Supporters of Our 2017 Season

Season Sponsors

(\$1000 and up)
Brian Abeel and Leticia Lopez
Dana Armstrong and Mathew Tebbs
Chris Bailey
Page and Nathan Byers
Tom Challinor
Katherine and Todd Cleland
Mary DeMange
Patrick Lennon and Randy Cote
Paul Lippert and Julie Beckman
Ann McCurdy and Frank Lawler
Mary Schaefer
Richard Schaefer
Teresa Thuman and Ray Bunnage
Barbara Yohai and David Hanscom
Microsoft
4Culture
Seattle Office of Arts & Culture
Anonymous

Sound Sponsors

(\$500- \$999)
Roger Curtis and Deborah Wolf
Marianna de Fazio and Agastya Kohli
Lee Ann Hittenberger
Roger and Kathleen Huston
Rob and Laura Kessler
Charlotte Lin and Robert Porter
Gregory Lyle-Newton
Brian Mize
Merideth Nelson
Alber Sucupira and Corey McDaniel
Carol Thuman
Margaret Toomey
Leslie Wisdom
John Zmolek and Jerry Jutting
In honor of Bobby Hutton
Boeing
Anonymous

Sound Believers

(\$250- \$499)
Lenore and Dick Bensinger
William Higham
Patreese Martin
Grace Nordhoff and Jonathan Beard
Anita and Andy Proudfoot
Elizabeth Schaefer
Karen Shaw
Bruce Sherman
Rosemary Willman
Lynne Winslow
Michael Winters
In memory of Betty Jo Emler
Anonymous

Sound Partners

(\$100-\$249)
Shawna Ader
Chase Anderson
Jane and Albert Bender
Philip Brazil
Ina Chang
Joanne Cleland

Marie Coon
Robert Day
Marie Favro
Lisa Finkral
Anne Friedlander
Keith Gehrig
Dick and Faye Gillett
Karen Hansen
Tod Harrick
Lloyd Herman
Kathy Hsieh
Geoff Jones and Barbara Kelley
Sherry Kerchner
Akshay Kulkarni
Selena Lee
Wayne Lennon and Colleen Lafferty
Martha Lester
Sue and Bob Liebling
Douglas Loewen
Laurie Lynch
Maleah Metz
Sharon Metcalf and Randy Smith
Penny and David Miller
Patricia Naumann
Alan Ness and Margaret Bergman-Ness
Dan Niven
Ma deva Parmita
Tom Pouliot
Roberta Reed
Jeanette Sanchez-Izenman
Lee Scheingold
Hannah Schnabel
William Seach
David Sebba
Mark and Patti Seklemian
Chris Shea
Jacob Nelson and Brandon J. Simmons
Tori Spero
Constance Swank
Holly Thuman
Eugene Usui
Ruthanne Wong
Kairu Yao
Nathan Young
Louis Zibelli
Anonymous

Sound Friends

(\$50- \$99)
Geoff Alm
Dana Amromin
Susan Anderson
Roy Arauz
John Bodoia
John Bradshaw
Julia Buck
Carolyn Burton
Zandi Carlson
Stephanie Costa
Emily Davis
David Gassner
Clarence Gillett
Elizabeth Heath
Elizabeth Heffron
Ken Holmes
Aimee Hong

Lacey Johnson
Victoria Kaplan
Alyssa Keene and Tim Moore
Subodh Kirtane
Marty Krouse
Audrey Lew
Andrew Litzky and Llyssa Holland
Martha Lloyd
Mary Ellen Maxell
Jennifer McGovern
Kaytlin McIntyre
Tami and Joe Micheletti
Coe Tug Morgan
Sherry Narens
Laura Newborn
Cheryl Philips
Carol Rappaport
Eric and Karen Richter
Lynda Rosendahl
Mary Christina Smith
Corey Spruill
Ray Tagavilla
Ayo Tushinde
Nicole Vernon
Phil Wood and Judy Mahoney
Ballard & Fremont Neighborhood
Accupuncture
Anonymous

Sound Donors

(\$1- \$49)
Louise Allen
Jessica Andrewartha
Jay Athalye
Celeste Axelson
Kayti Barnett
Christine Bateman
Julia Beers and Casey Stryer
Sarah Beeson
Ian Bond
Robert Boruchowitz
Terry Boyd
Brelan Branch
Betsy Bridwell
Geb Brown and Alysha Curry
Mary Brown
Paul Budraitis
Evan Bunnage
Stacey Bush
Stan Case
Peter Chartrand
Jean Chen
Jason Choi
Anna Constant
Andrew Creech
Christi Cruz
Keith Dahlgren
Casey DeCaire
Devin DeCosta
Beth DeVries
Emmett Driscoll
Bryan Edenfield
Jennifer Ewing
Robert Falk
Lorn Fant
Mike Gilson

Amir Goins
Joan Goverdare
Janell Gray
Sarah Greenman
Sam and Matthew Gilworth
Katrin Hosseini
David Hsieh
Tracy and Tim Hyland
Wendy Jackson
Christine Jayne
Carol Johnson
Alyssa Kay
Catherine Kettrick and David Mills
Paul Lewis
Erica Lindgren
Natalie Matthews
Jody McCoy
Amelia Meckler Bowers
Ken Michels
Emily Penick
Robert Pennell
Van Lang Pham
Sriharshita Ponnada
David Ragozin
Michael Ramquist
Kim Ramsey
Shelley Reiss
Gavin Reub
Sam Robbins
Elena Robinson
Carol Roscoe and Matthew Smucker
Jennifer C. Russell
Tracy Satterfield
Carol Schapira
Greg Scheiderer
Drew Schilson
Douglas Schneider
Yuna Serra
Genie Sheth
Jonathan Shue
Pat Sibley
Julie Simpson
Charles Sleicher
Tom Stiles
Daniel Stoltenberg
Erik Swanson
Tim Takechi
Elizabeth Uselton
Carlos Wagener-Sobrero
Adam J. Wagner
Henry James Walker
Larry Wall
Celeste Williams
Ronni Wolfe
Wendy Woolery
George and Diane Pearce Wright
In honor of AnnaClaire Laush
Anonymous

Sound Theatre Company strives to acknowledge all donations received, and this list reflects those received between January 2017 and January 2018. If you have donated and do not see yourself acknowledged, or if you would like to be listed differently, please notify us at development@soundtheatrecompany.org.

ABOUT THE ART EXHIBIT IN THE LOBBY

In partnership with the eSe Teatro production of *Imaginary Opus: A Sensory Experience in 2 Acts*, we are proud to display the art work of Lupita Cano, a bold, abstract painter with a dynamic personality and a passion for creating art. Lupita, a Seattle native and proud self-advocate with Down Syndrome, discovered her love of painting over 18 years ago. Painting gives her pleasure and purpose and a sense of freedom and limitless possibilities not easily found in other aspects of her life. In 2001, with support from family, friends and disability professionals, Lupita translated her passion for painting into a career. She started her own business, AE Designs by Lupita, selling reproductions of her original work. Lupita has a natural gift for using color and composition and over the years, guided by intuition and heart, has evolved a unique and striking painting style.

In October 2007, Lupita was thrilled to exhibit her work in her first solo show, "Lupita Cano: Through My Eyes", at the Vision Gallery in downtown Seattle. Her second solo show "I Beg To Differ" was exhibited at the MOSA (Museum of Special Artists) in 2017. Lupita is very proud to own her own business and especially happy to be able to share her gifts and inspire others to listen to their hearts and take a chance.

"I see blobs of paint, I see aqua, or red, moving through the air. There are sounds, sights, smells, tastes. You gotta let the art move within you, as if you were the paintbrush. Share whatever you've got within you. Gifts."

Learn more at lupitacanoartist.com.



PRESENT



IMAGINARY OPUS

A Sensory Experience

in Two Acts

Book & Lyrics by Rose Cano

Music by David Nyberg

Directed by

Rebecca Tourino Collinworth

Music Direction by

Josh Archibald-Seifer

Visual Art by Lupita Cano

Feb 25 - 28, 2018

at 7:00 PM

Center Theatre

@ Seattle Center Armory

Tickets & additional information:
SoundTheatreCompany.org

Funding Provided By

N | A | L | A | C

national association of latino arts and cultures



CULTURE



OFFICE OF ARTS & CULTURE

eSe Teatro is fiscally sponsored
by Shunpike.

JOIN US IN APRIL FOR:



SOUND
THEATRE COMPANY

in partnership with DEAF SPOTLIGHT PRESENTS
An ASL-Mainstream Production

William Shakespeare's **ASL**
MIDSUMMER
NIGHT'S
DREAM

Co-Directed by **HOWIE SEAGO**
and **TERESA THUMAN**

APRIL 21 – MAY 12, 2018
12TH AVE ARTS • MAINSTAGE

TICKETS: soundtheatrecompany.org

Sponsored by The Hearing, Speech & Deaf Center of Seattle

SOUND THEATRE COMPANY ORGANIZATIONAL STATEMENTS 2018

MISSION STATEMENT

Sound Theatre Company empowers artists to give voice to the dignity and diversity of the human experience--moving audiences toward a more just and compassionate world.

VISION STATEMENT

Sound Theatre Company envisions a world that joyfully nurtures the creation of transformative theatre experiences and celebrates the open, honest and truthful exchange of diverse and inclusive voices.

EQUITY STATEMENT

Sound Theatre Company commits to the work of embracing inclusivity and diversity. Through our programming, casting, hiring, audience building and volunteer recruitment practices, we create an organization that models and builds the inclusive society we envision by treating everyone with respect, without judgment or bias.

VALUES

COMMUNITY

We recognize the unique communal bond that is created when artists and audiences convene for stories presented in live performance. We value the contributions of all members of this community and the healthy, evolving relationships that are strengthened by theatre: artists, audience, staff, volunteers, donors and community partners.

COLLABORATION

We embrace the possibilities that are imagined and forged during the creation of theatrical work. We seek out collaborations with other arts, education and social service organizations in our effort to create a more robust and reflective civil society.

INTEGRITY

We are dedicated to truth, transparency, accountability, equity, and inclusion in all aspects of our organization. We believe in creating innovative works within the artist-centered and fiscally-responsible limits we have established since our founding.

EXCELLENCE

We relentlessly pursue artistic excellence across a broad range of theatrical genres drawing from and enhancing the talents of our artistic community to consistently deliver moving, acclaimed and award-worthy productions.

INNOVATION

We bring innovative and expressive works to life by challenging our artists to take thoughtful, creative risks and by providing a safe, supportive and inclusive working environment.

MENTORSHIP

We bring established and emerging artists together to enhance their mutual artistic and professional journeys. As needed, we provide mentorship, coaching, professional development, showcase performances, and other enrichment opportunities.

